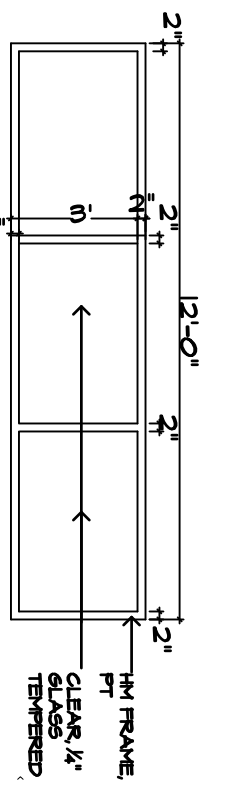


ROOM FINISH SCHEDULE

ROOM NUMBER	ROOM NAME	FLOOR MAT.	BASE MAT.	WALLS N	E	S	M	CEILING MAT.	HEIGHT	NOTES
FIRST FLOOR										
01	STAIR	-	-	PT	PT	PT	PT	EXG/PT	STRUCT.	-
02	RETAIL	FT	SC	PT/INT	PT/INT	PT/INT	PT	EXG/PT	STRUCT.	SEE A30 FOR TILE DETAILS
03	STORAGE	FT	SC	PT/CMU	PT/CMU	PT/CMU	PT	EXG/PT	STRUCT.	SEE A30 FOR TILE DETAILS
04	DISH WASH	FT	EXG	PT/FRP	PT/FRP	PT/FRP	PT	EXG/PT	STRUCT.	SEE A30 FOR TILE DETAILS
05	HOT PREP	FT	SC	PT/FRP	PT/FRP	PT/FRP	PT	EXG/PT	STRUCT.	SEE A30 FOR TILE DETAILS
06	PREP AREA	FT	SC	PT/INT	PT/INT	PT/INT	PT	EXG/PT	STRUCT.	SEE A30 FOR TILE DETAILS
07	MEN'S	EXG	EXG	PT	PT	PT	PT	EXG/PT	STRUCT.	-
08	WOMEN'S	EXG	EXG	PT	PT	PT	PT	EXG/PT	STRUCT.	-
BASEMENT										
B01	STAIR	-	VB	PT	PT	PT	PT	EXG/PT	STRUCT.	-
B02	STORAGE	VT	VB	PT	PT	PT	PT	EXG/PT	STRUCT.	-
B03	LOADING	PT	-	PT	PT	PT	PT	EXG/PT	STRUCT.	-
B04	MECH	PT	-	PT	PT	PT	PT	EXG/PT	STRUCT.	-
B05	BATH	PT	-	PT	PT	PT	PT	EXG/PT	STRUCT.	-
B06	STORAGE	PT	-	PT	PT	PT	PT	EXG/PT	STRUCT.	-
B07	WALKIN COOLER/FREEZER	-	-	MT	MT	MT	-	EXG/PT	STRUCT.	56 BASE AT EXTERIOR
B08	OVERFLOW PREP	FTI	SC	MT	MT	MT	CH/INT	EXG/PT	STRUCT.	EXTEND WALL TILE TO CEILING
B09	OFFICE	PT	-	PT	PT	PT	PT	EXG/PT	STRUCT.	-
B10	LOCKER RM	PT	-	PT	PT	PT	PT	EXG/PT	STRUCT.	-
B11	HALL	VT	VB/55	PT	PT	PT	PT	EXG/PT	STRUCT.	-

NOTES:
1. PAINT ALL EXISTING DOORS AND FRAMES TO REMAIN

KEY	BASE	WALLS	CEILING
CRT CARPET	VB VINYL BASE	MT MALL PAINT	ACT ACROUSTICAL CEILING TILE
SVT SHEET VINYL & VINYL TILE	VT VINYL TILE	PT FLAT LATEX MALL PAINT	ACT VINYL FACED CEILING TILE
FT FLOOR TILE	VB VINYL TILE	PT SEMI-GLOSS ENAMEL MALL PAINT	PT PAINT BOARD
PT CARPET	VB VINYL TILE	PT FIBERGLASS REINFORCED PANEL	PT PAINT BOARD
EP EPOXY COATING	VB VINYL TILE	ST STORE TILE	PT PAINT BOARD
PTF PAINT FLOOR	VB VINYL TILE	ND WOOD BEAD BOARD TO MATCH	PT PAINT BOARD
	55 4" 55 BASE	EXG EXISTY PAINT	



A3 B1-1 BORROWED LIGHT
1/4"=1'-0"

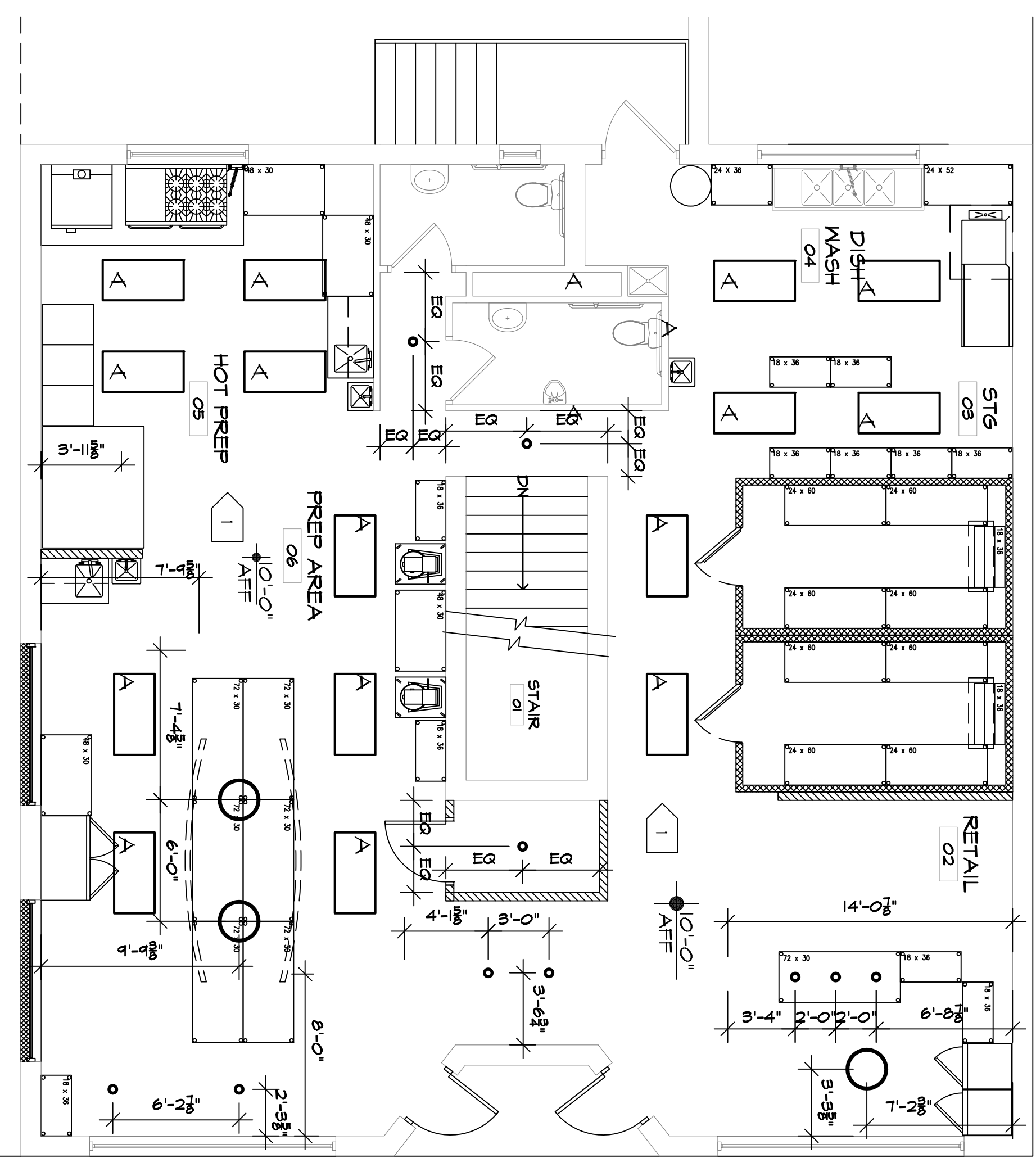
DOOR SCHEDULE

DOOR NUMBER	FROM	TO	DOOR TYPE	DOOR SIZE	FRAME TYPE	LABEL	HEAD	JAMB	SILL	HARDWARE MAKE	WALL TYPE	NOTES
B08 A	LOADING	STORAGE	FM	(28'-0"X7'-0")	HM	-	-	-	-	6B	FLUSH PANEL	-
B08 B	PREP	PREP	FM	9'-0"X7'-0"	CASFD	-	-	-	-	6B	VISION LIGHT FOOD SERVICE DOUBLE ACTION DOOR	-
B09 A	HALL	PREP	HM	3'-0"X7'-0"	HM	-	-	-	-	6B	FLUSH PANEL	-
B09 B	LOCKER	OFFICE	MD	3'-0"X7'-0"	MD	-	-	-	-	6B	FLUSH PANEL	-
O2A	EXTERIOR	RETAIL	AL	3'-0"X7'-0"	AL	-	-	-	-	CMU	FULL GLASS	-
O2B	EXTERIOR	PREP AREA	AL	3'-0"X7'-0"	AL	-	-	-	-	CMU	FULL GLASS	-
O6	PREP AREA	STORAGE	HM	3'-0"X7'-0"	HM	-	-	-	-	6B	FULL GLASS	-

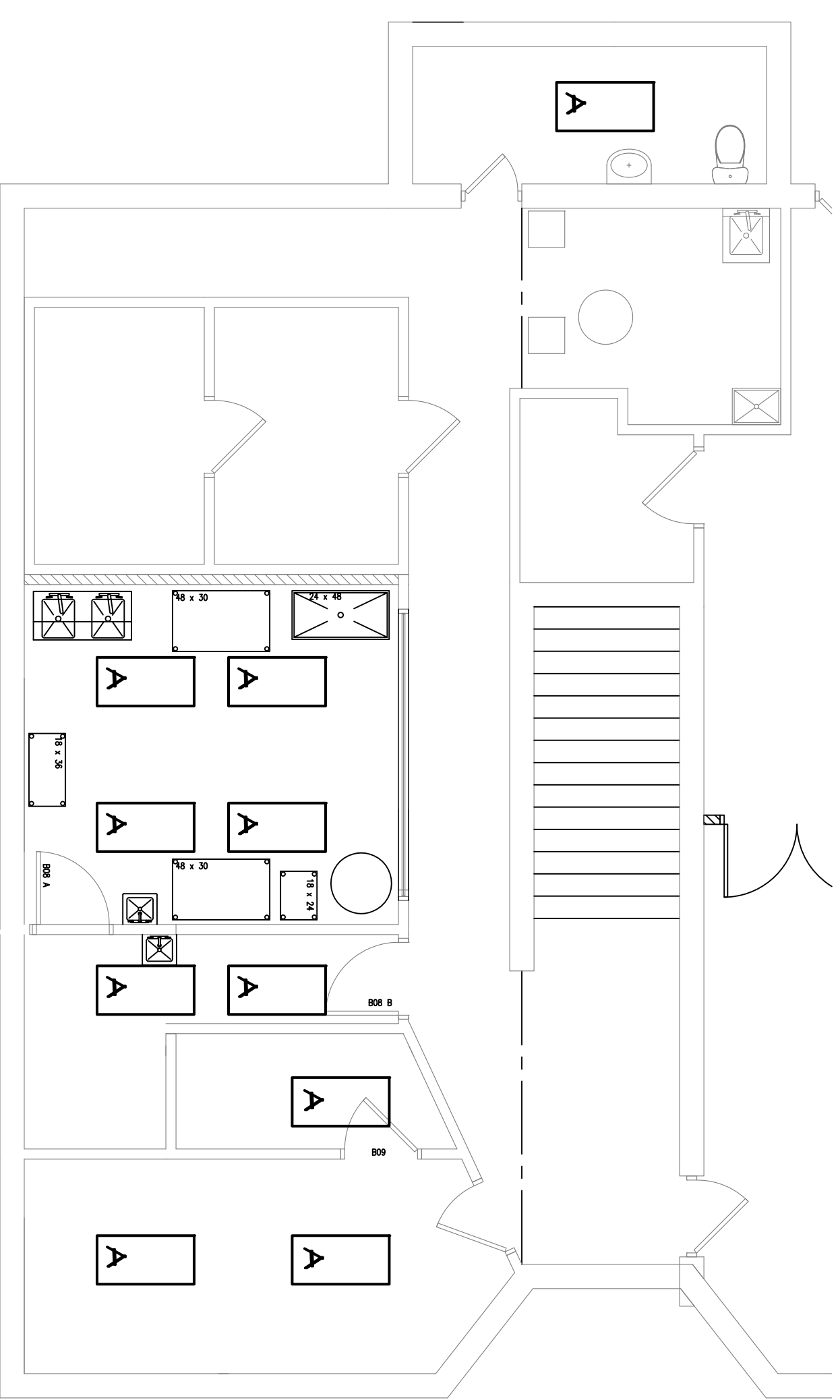
DOOR NOTES:
1. ALL HARDWARE MATCH EXG
2. VERIFY HARDWARE REQUIREMENTS WITH THE OWNER. PROVIDE COMPLETE HARDWARE SET FOR EACH OPENING.

LIGHTING KEY

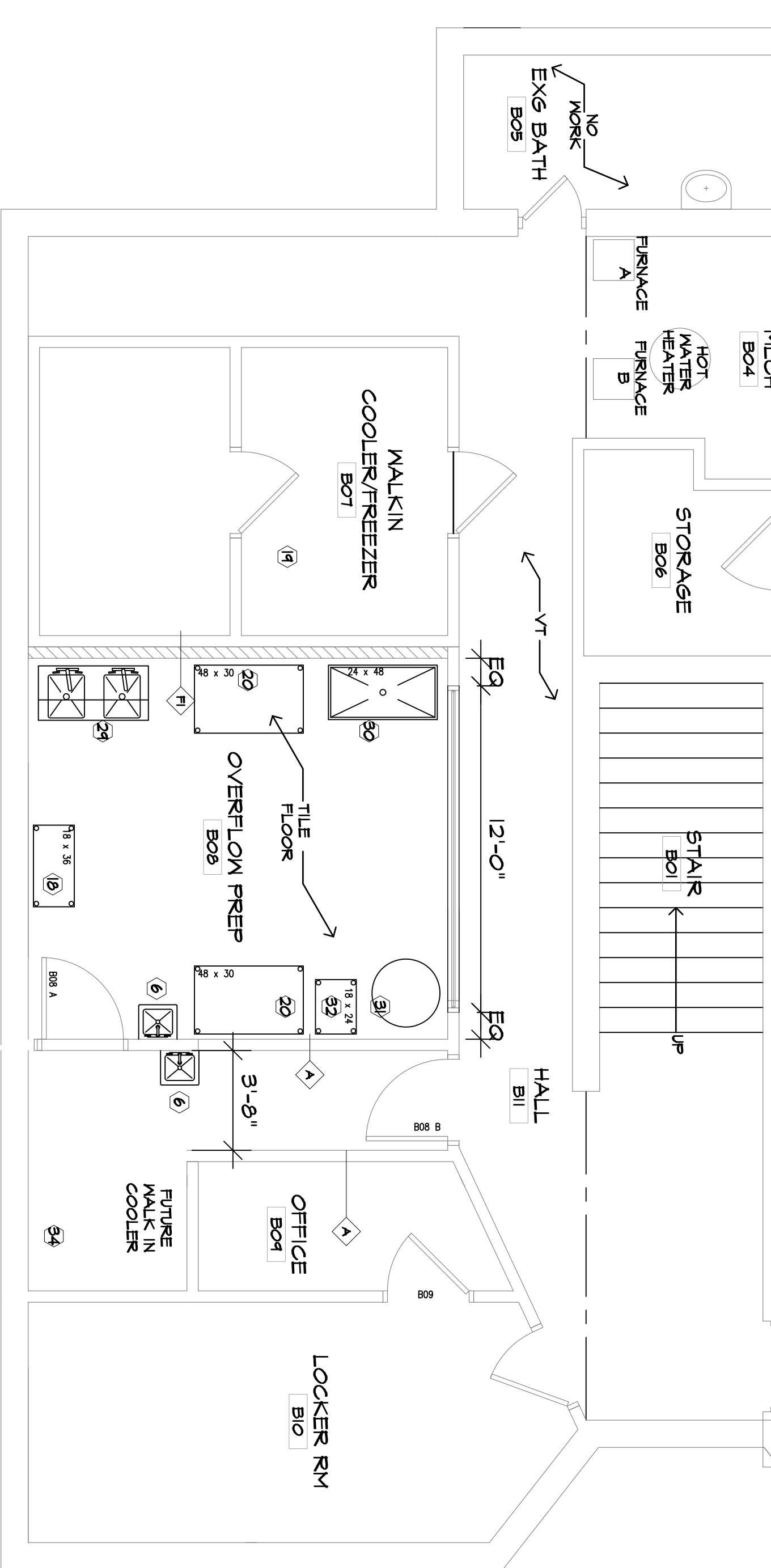
- A 2'X4' RECAP FLUORESCENT, SURFACE MOUNT.
- MOD 46 INDIRECT/DIRECT - LITECONTROL # FTD46-475MO-SGL-T/CAN
- RND5 2' - HEMILLIAMS # RND52-2-55IT-FXA-EB3-JUNY
- D202 SOFT INDUSTRIAL - LIGHTING REPRESENTATIVE: # D202-2-55IT-FXA-EB3-JUNY
- LARGE - D'AC # 8012-42MT
- 1 REUSE EXG FLUORESCENT LIGHTING, REVIEW LAYOUT WORKER



B3 FIRST FLOOR LIGHTING PLAN
5/16"=1'-0"



A3 PARTIAL BASEMENT LIGHTING PLAN
5/16"=1'-0"



A5 BASEMENT FLOOR PLAN
1/4"=1'-0"

Drawn By: CS
Date: 02/21/12
Project No.: 1111

I hereby certify that this plan, specification, or report was prepared by me or under my direct supervision and that I am a duly Licensed Architect under the laws of the state of Minnesota.
Print Name: Mina Adsit
Signature: [Signature]
Date: 12/3/12
License No.: 18710

PROJECT TITLE
FOOD STUDIO REMODELING
3722 CHICAGO AVE. S.
MINNEAPOLIS, MN 55407

CONSTRUCTION SET

Sheet Title
BASEMENT FLOOR PLAN, DOOR SCHEDULE, FINISH SCHEDULE, LIGHTING PLANS

Sheet Number
A2.0